

SoftProbe Remote Debugger

- Windows* NT, 95 and 3.x Hosted
- Real- and Protected-Mode Debugging
- OMF Format Support
- Source and Symbolic Debugging for C/C++
- Extensive System-Level and I/O Views

SoftProbe Remote Debugger is a Windows-hosted Source-Level Debugger for embedded development. A Remote Debugger allows for the downloading of a program from the host PC and debugging on the actual target system.

The Target Monitor controls program execution on the target. The Target Monitor communicates with the host via a RS-232 serial port.

This tool provides source-level and symbolic debugging for C and Assembly. Support for debugging C++ applications is provided at source-level with mangled C++ symbols. Among others, the debugger provides the following features and views:

Code Window - Shows code in source, disassembler and mixed modes.

Breakpoint Window - Defines breakpoints based on symbolic addresses.

System Level Views - GDT, IDT, LDT, TSS and 386/387 Registers.

Memory Window - Shows memory in a variety of forms.

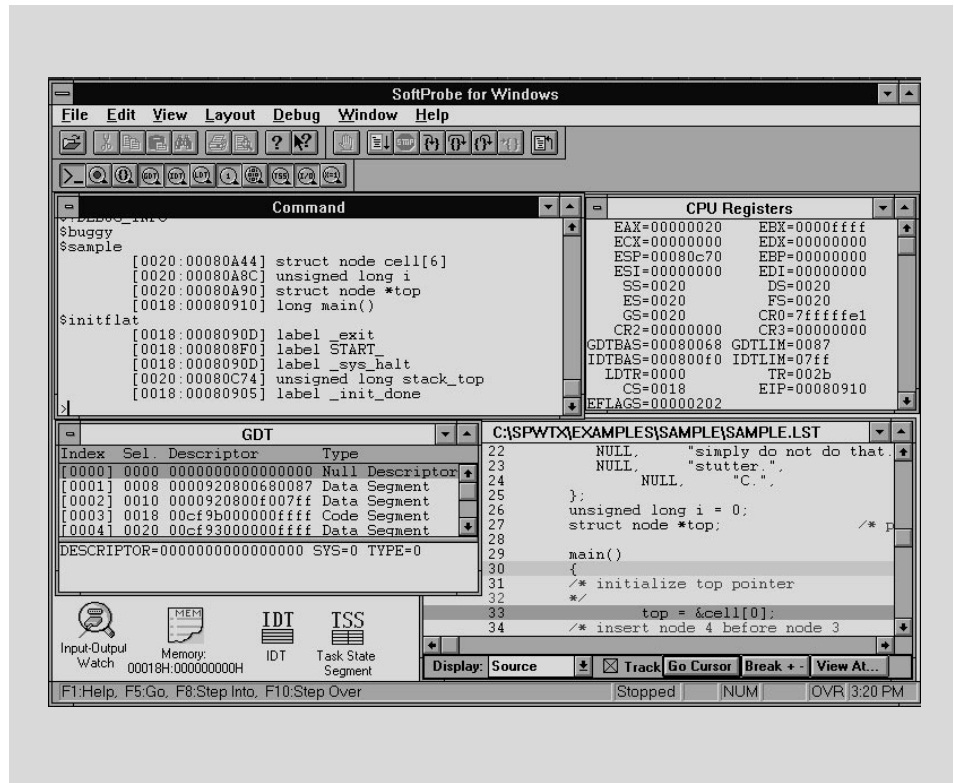
Watch Window - Allows the user to view and edit symbols.

Call Stack Window - Shows the active chain of function calls.

Locals Window - Shows the active local variables.

I/O Watch Window - Allows the user to read/write to any I/O port.

Symbol Browser Window - Allows the user to browse symbols, set breakpoints, add program variables to the Watch Window.



SoftProbe Remote Debugger connects to the target via a RS-232 serial port. It is the Target Monitor Program that actually controls program execution on the target and communicates with the debugger on the host system.

SoftProbe Remote Debugger includes a number of pre-configured target monitors for 386/486/Pentium development boards. Assembly source code for target-dependent modules, link files, makefiles, and step-by-step instructions are included for customizing the Target Monitor to suit the needs of your target system. The Target Monitor supports auto-start ROM-based applications.

HOST SYSTEMS SUPPORTED:
Windows 3.x running Win 32S, Windows NT, Windows 95

PROCESSORS SUPPORTED:
Intel386™, Intel486™ and Pentium® processors

CONTACT:
Systems & Software, Inc
18012 Cowan, Suite 100
Irvine, CA 92614
Phone: (800) 788-4386
(714) 833-1700
FAX: (714) 833-1900
e-mail: sales@ssi.com
BBS: (714) 833-8152
WWW: <http://www.ssi.com>